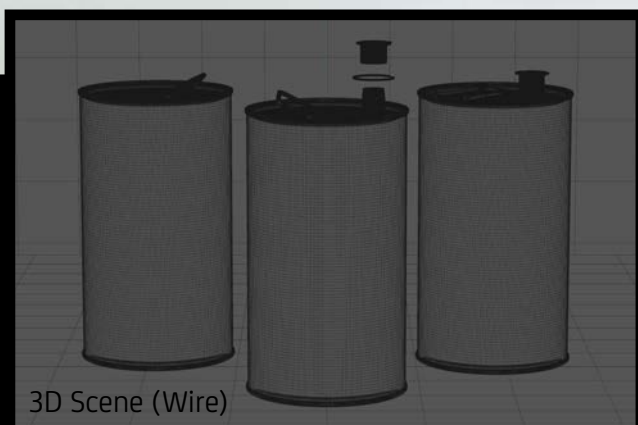




Final Render



Olive Oil Tin Metal Can 1.5Le with Cap

Product Id Model_0000504

What's Included:

- Packaging Model in OBJ and FBX file formats with open system
- Cinema 4D R16-17 Scene File (.C4D)
- Textures with layered TIFF file and UV-Mesh (4000x4000pix 300dpi), HDRi, Materials
- UV layout
- Renders

All Models Are High Poly



FBX and OBJ file formats are compatible with software:
 All Autodesk programs, such as: Maya, 3D Max, Mudbox, AutoCAD, Inventor, MotionBuilder, Revit, Softimage, Alias etc.;
 ZBrush, MODO, 3D Coat, Adobe Photoshop, Keyshot, Rhinoceros, SketchUp, NewTek Lightwave, Vue xStream, SolidWorks, Houdini, Blender, Unreal Engine etc.





Professional highly detailed 3D model of Olive Oil Tin Rounded Metal Can with handle and open system

What's included:

- 3D Model in OBJ and FBX file formats with packaging
- Cinema 4D R16-17 scene (.C4D)
- Textures with layered TIFF file and UV-Mesh (4000x4000 pixels, 300dpi, RGB)
- UV layout ready
- Renders (2560x1707 pixels, JPG)
- PDF readme

ROYALTY-FREE LICENSE

©2016 WaldemarArt Design Studio/GERMANY
www.Waldemar-Art.com

©2016 WaldemarArt Design Studio/GERMANY www.Waldemar-Art.com





