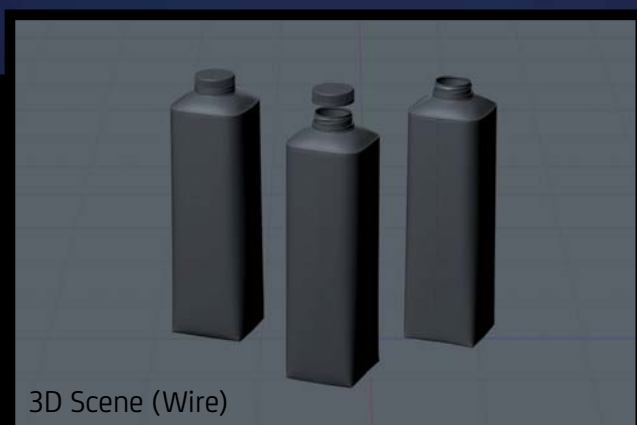




Final Render



## Tetra Top Base 1000ml with Eifel 038 Opening

Product Id Model\_0000547

### What's Included:

- Packaging Model in OBJ and FBX file formats
- Cinema 4D R16-18 Scene File (.C4D) (Octane Render)
- Textures with layered TIFF file and UV-Mesh (4000x4000pix 300dpi), HDRI, Materials
- UV layout
- TIFF layered renders with a post production

All Models Are High Poly

**Note:** You should have Octane Render to render C4D scene file.



**FBX and OBJ file formats are compatible with software:**  
All Autodesk programs, such as: Maya, 3D Max, Mudbox, AutoCAD, Inventor, MotionBuilder, Revit, Softimage, Alias etc.; ZBrush, MODO, 3D Coat, Adobe Photoshop, Keyshot, Rhinoceros, SketchUp, NewTek Lightwave, Vue xStream, SolidWorks, Houdini, Blender, Unreal Engine etc.











