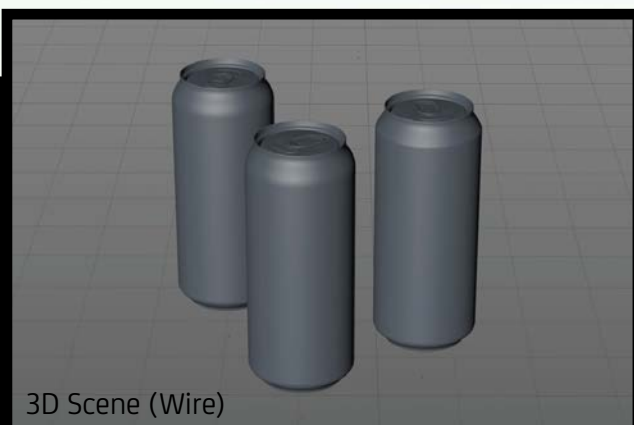




Final Render



3D Scene (Wire)

## Ball Metal Cans 440ml (Rexam) With Soft and Hard Edges

Product Id Model\_0000559

### What's Included:

- Packaging 3D Models in OBJ and FBX file formats
- Cinema 4D R16-18 Scene File (.C4D)
- Textures with layered TIFF file and UV-Mesh (4000x4000pix 300dpi), HDRI, Materials
- UV layout
- TIFF layered renders with a post production

All Models Are High Poly

Note: You should have Octane Render to render C4D scene file.



**FBX and OBJ file formats are compatible with software:**

All Autodesk programs, such as: Maya, 3D Max, Mudbox, AutoCAD, Inventor, MotionBuilder, Revit, Softimage, Alias etc.; ZBrush, MODO, 3D Coat, Adobe Photoshop, Keyshot, Rhinoceros, SketchUp, NewTek Lightwave, Vue xStream, SolidWorks, Houdini, Blender, Unreal Engine etc.



WaldemarArt Design Studio/GERMANY | www.Waldemar-Art.com



Professional highly detailed 3D model of the Metal Can 440ml Soft edges

What's included:

- 3D Model in OBJ and FBX file for use with a packaging
- Cinema 4D R16-18 scene file (.C4D)
- Textures with layered Tiff files
- UV Mesh (4000x4000 pixels)
- 3D Output (RGB)
- UV layout ready
- Renders (2560x1707 pixels, JPG)
- PDF-readme

ROYALTY-FREE LICENSE

©2017 WaldemarArt Design Studio  
www.Waldemar-Art.com  
MADE IN GERMANY

**METAL CAN** Aluminium can for soda, water, beer and other drinks  
**440ml**

**PREMIUM 3D MODEL PACK**  
**SOFT EDGES**

**WA**  
www.Waldemar-Art.com

**METAL CAN** Aluminium can for soda, water, beer and other drinks  
**440ml**

**PREMIUM 3D MODEL PACK**  
**HARD EDGES**

**WA**  
www.Waldemar-Art.com





WaldemarArt Design Studio/GERMANY | www.WaldemarArt.com







