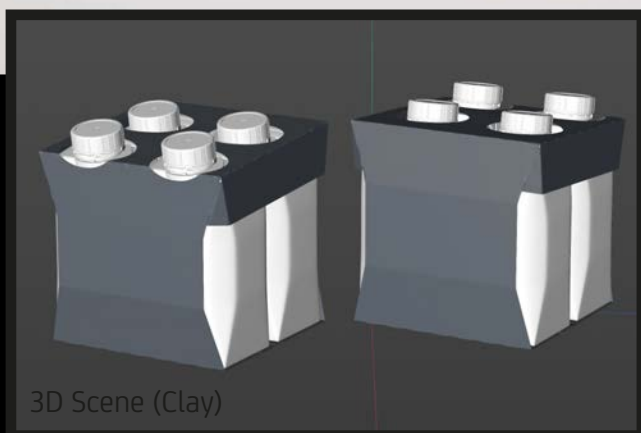




Final Render



4x Carton Pack for the Tetra Prisma EDGE 200ml

Product Id Model_0000899

What's Included:

- Packaging 3D Models in OBJ and FBX file formats
- Cinema 4D R16+ Scene File (.C4D)
- Textures with layered TIFF file and UV-Mesh (4000x4000pix 300dpi), HDRI, Materials
- UV layout
- Renders, PDF readme

Note: you should have Octane Render 3.x get installed to render Cinema 4D scene file. DOES NOT INCLUDE the Tetra Prisma 3D model.



FBX and OBJ file formats are compatible with software: Maya, 3DS Max, Mudbox, AutoCAD, Inventor, Motion Builder, Revit, Softimage, ZBrush, MODO, 3D Coat, Keyshot SketchUp, Adobe Dimension CC, Rhinoceros, Lightwave, Vue xStream, SolidWorks, Houdini, Blender, Unreal Engine etc.





Benefits:

- Packaging 3D model made of original keylines,
- Premium highly detailed packaging 3D model,
- UV-ready,
- Layered TIFF Textures with 4K resolution,
- Free updates for customer
- Best for close up
- Easy to use

Professional highly detailed 3D model of Carton Packaging for four Tetra Prizma Edge 200ml

What's included:

- 3D Model in OBJ and FBX file formats
- Cinema 4D R16+ scene (C4D) Octane 3.0x (4000x4000 pixels, 300dpi, RGB)
- Textures with layered Tiff file and UV-Mesh
- UV layout ready
- Renders (2560x1707px),
- PDF readme

©2021 WaldemarArt Design Studio
www.Waldemar-Art.com
MADE IN GERMANY

Benefits:
• Packaging 3D model made of original Tetra Pack keylines,
• Premium highly detailed packaging 3D model with separated parts,
• UV-ready,
• Layered TIFF Textures with 4K resolution,
• Free updates for customer

What's included:
• Packaging 3D model made of original Tetra Pack keylines,
• Premium highly detailed packaging 3D model with separated parts,
• UV-ready,
• Layered TIFF Textures with 4K resolution,
• Free updates for customer









