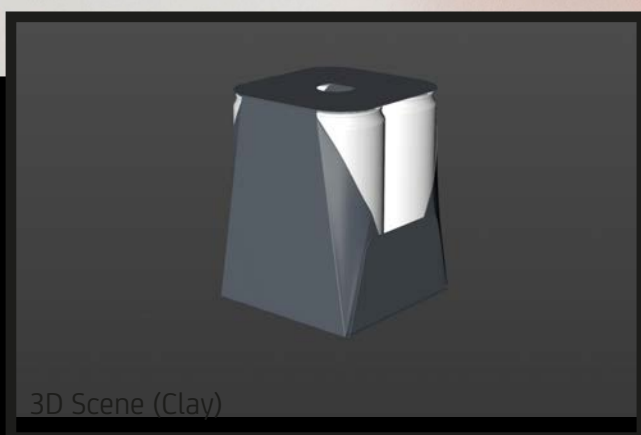




Final Render



3D Scene (Clay)

4x Carton Pack for Sleek Soda Can 330ml

Product Id Model_0000901

What's Included:

- Packaging 3D Models in OBJ and FBX file formats
- Cinema 4D R16+ Scene File (.C4D)
- Textures with layered TIFF file and UV-Mesh (4000x4000pix 300dpi), HDRI, Materials
- UV layout
- Renders, PDF readme

Note: you should have Octane Render 3.x get installed to render Cinema 4D scene file. DOES NOT INCLUDE the Soda Can 3D model.



FBX and OBJ file formats are compatible with software: Maya, 3DS Max, Mudbox, AutoCAD, Inventor, Motion Builder, Revit, Softimage, ZBrush, MODO, 3D Coat, Keyshot SketchUp, Adobe Dimension CC, Rhinoceros, Lightwave, Vue xStream, SolidWorks, Houdini, Blender, Unreal Engine etc.













